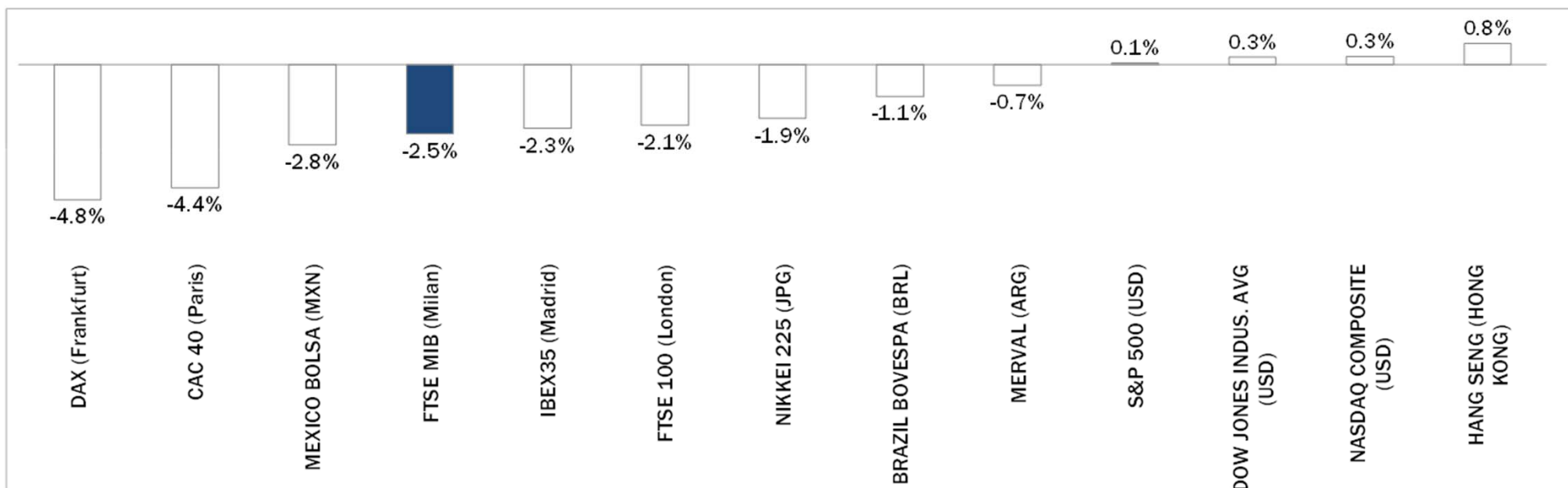


# Weekly Stock Market Report for Telecom Italia Retail Shareholders

November 30th – December 4th, 2015

# Weekly Performance of Major Worldwide Market Stock Exchanges

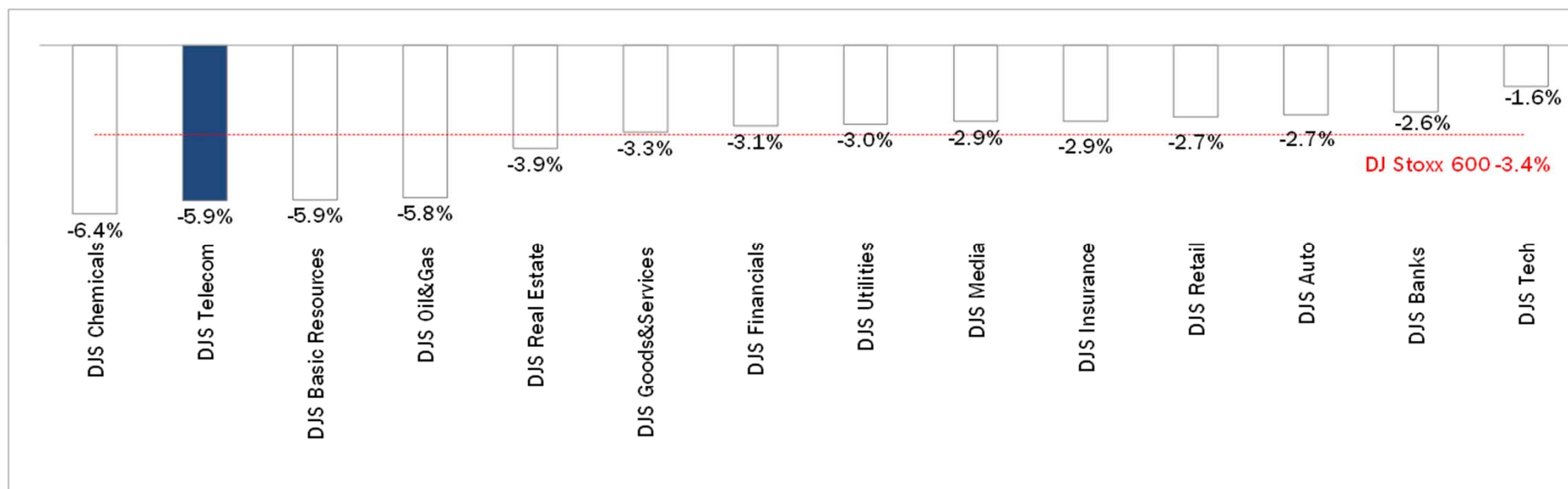


	Index Point as of 04-Dec-15	Performance (Δ%)*					Last 52 weeks		Daily average volume **		Market Cap. (mln. local cur.)
		1 week	1 month	6 months	1 year	from Jan. '15	Low Price	High Price	1 week	1 month	
Europe											
FTSE MIB (Milan)	22,021	-2.5%	-1.3%	-5.6%	13.4%	15.8%	17,729	24,157	573,873,478	566,106,614	459,253
FTSE 100 (London)	6,238	-2.1%	-2.7%	-9.1%	-6.6%	-5.0%	5,768	7,123	767,307,328	710,448,777	1,736,388
DAX (Frankfurt)	10,752	-4.8%	-0.9%	-5.2%	9.1%	9.7%	9,219	12,391	113,277,358	88,686,656	1,060,104
CAC 40 (Paris)	4,715	-4.4%	-4.7%	-5.5%	9.0%	10.3%	3,926	5,284	152,262,134	125,460,319	1,276,400
IBEX35 (Madrid)	10,079	-2.3%	-3.8%	-9.6%	-5.1%	-2.0%	9,231	11,885	348,466,643	364,103,763	587,506
America											
DOW JONES INDUS. AVG (USD)	17,848	0.3%	-0.1%	-0.3%	-0.3%	0.1%	15,370	18,351	107,242,056	117,781,130	5,275,040
S&P 500 (USD)	2,092	0.1%	-0.5%	-0.2%	1.0%	1.6%	1,867	2,135	602,936,630	618,599,471	18,666,610
NASDAQ COMPOSITE (USD)	5,142	0.3%	0.0%	1.6%	7.8%	8.6%	4,292	5,232	441,421,510	438,894,182	7,662,124
MEXICO BOLSA (MXN)	42,994	-2.8%	-5.2%	-3.5%	0.4%	-0.4%	39,257	46,078	284,817,933	224,879,299	2,036,836
MERVAL (ARG)	13,071	-0.7%	2.1%	16.2%	36.7%	52.4%	7,276	14,597	7,246,119	13,122,131	12,920
BRAZIL BOVESPA (BRL)	45,361	-1.1%	-4.9%	-15.2%	-11.8%	-9.3%	42,749	58,575	471,289,670	354,630,770	1,535,490
Asia											
NIKKEI 225 (JPG)	19,504	-1.9%	1.2%	-4.7%	8.8%	11.8%	16,593	20,953	1,321,091,021	1,348,599,774	355,882,400
HANG SENG (HONG KONG)	22,236	0.8%	-2.8%	-18.4%	-7.4%	-5.8%	20,368	28,589	1,932,975,155	1,666,265,314	13,708,650

\* performance calculated on closing price, \*\* n. of traded shares

Source: Bloomberg LP

# Weekly Performance of Major European Sectors



Index	Index Point as of 04Dec'15	Performance (Δ%)*					Last 52 weeks		Daily average volume **		Market Cap. (mln. local cur.)
		1 week	1 month	6 months	1 year	from Jan '15	Low Price	High Price	1 week	1 month	
<b>DJ Stoxx 600</b>	370.59	-3.4%	-2.5%	-5.6%	7.5%	8.2%	318.95	415.18	2,800,867,072	2,673,855,006	9,624,137.00
<b>Sectors</b>											
DJS Telecom	350.12	-5.9%	-3.5%	-6.1%	7.3%	9.4%	304.05	399.43	302,187,843	317,346,226	480,274.72
DJS Auto	564.85	-2.7%	4.2%	-9.7%	13.1%	12.7%	440.4	694.29	38,383,718	32,949,167	325,758.94
DJS Banks	187.59	-2.6%	-3.0%	-14.0%	-3.1%	-0.6%	174.77	227.47	1,106,799,219	1,108,077,092	1,210,091.88
DJS Basic Resources	258.47	-5.9%	-16.6%	-34.5%	-32.0%	-31.3%	248.23	437.1	157,502,072	150,082,726	173,981.09
DJS Chemicals	830.32	-6.4%	-3.9%	-10.2%	5.0%	5.6%	735.81	999.46	25,067,882	19,798,829	424,033.56
DJS Oil&Gas	275.11	-5.8%	-7.4%	-12.4%	-6.3%	-3.3%	242.42	347.07	151,735,502	126,714,985	522,406.50
DJS Financials	451.48	-3.1%	-1.2%	-1.2%	21.7%	19.6%	347.38	483.43	30,330,840	24,266,788	184,684.58
DJS Goods&Services	438.69	-3.3%	-0.8%	-6.5%	8.6%	8.0%	377.96	494.3	194,954,893	179,413,490	1,017,978.06
DJS Insurance	287.85	-2.9%	0.5%	3.4%	15.7%	14.9%	233.42	308.93	125,971,462	104,065,036	575,797.19
DJS Media	307.58	-2.9%	-2.0%	-2.8%	14.4%	12.9%	254.17	339.86	63,877,710	53,196,243	289,612.13
DJS Tech	359.17	-1.6%	1.1%	-1.0%	18.8%	15.1%	284.27	379.24	85,961,307	73,690,273	336,391.81
DJS Utilities	304.18	-3.0%	-4.1%	-5.9%	-5.8%	-3.6%	278.31	342.48	199,903,814	181,063,688	423,588.19
DJS Retail	351.52	-2.7%	-4.0%	-3.1%	16.0%	12.8%	283.04	383.51	98,413,582	101,460,575	384,201.91
DJS Real Estate	184.65	-3.9%	-4.1%	2.1%	14.0%	13.0%	151.81	201.27	25,272,044	23,040,906	164,661.22

\* performance calculated on closing price. \*\* n. of traded shares.

Source: Bloomberg LP



## Europe: Stock Performance of Main TLC Operators

### Last Week Performance

Iliad	-1.1%	<div></div>
Vivendi	-2.3%	<div></div>
Tele2	-2.8%	<div></div>
Teliasonera	-3.0%	<div></div>
Swisscom	-3.3%	<div></div>
Bouygues	-3.5%	<div></div>
Telefonica Deutschland	-3.9%	<div></div>
Telekom Austria	-3.9%	<div></div>
BT	-4.1%	<div></div>
KPN	-4.4%	<div></div>
Vodafone Group	-4.5%	<div></div>
Telenor	-4.6%	<div></div>
Telefonica	-4.8%	<div></div>
Telecom Italia Sav.	-5.2%	<div></div>
Telecom Italia Ord.	-5.3%	<div></div>
Numericable	-5.4%	<div></div>
DJStoxx Telecom	-5.9%	<div></div>
Proximus	-6.8%	<div></div>
TDC	-6.9%	<div></div>
Orange	-7.0%	<div></div>
DT	-7.4%	<div></div>
Altice	-14.5%	<div></div>

### 2015 Year-To-Date Performance

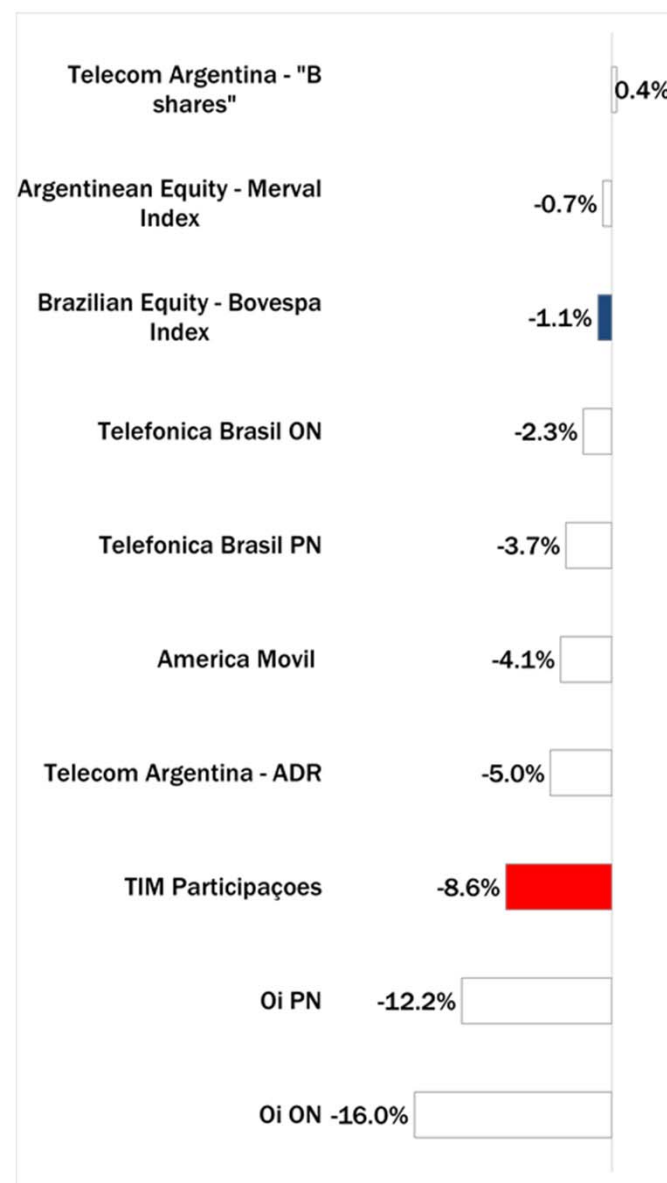
Telecom Italia Sav.	49.7%	<div></div>
Telecom Italia Ord.	32.3%	<div></div>
KPN	32.1%	<div></div>
DT	22.2%	<div></div>
BT	19.4%	<div></div>
Telefonica Deutschland	17.3%	<div></div>
Bouygues	13.9%	<div></div>
DJStoxx Telecom	9.4%	<div></div>
Orange	9.2%	<div></div>
Iliad	4.7%	<div></div>
Tele2	-0.9%	<div></div>
Proximus	-2.0%	<div></div>
Telenor	-3.2%	<div></div>
Vodafone Group	-3.2%	<div></div>
Swisscom	-5.0%	<div></div>
Vivendi	-5.3%	<div></div>
Telefonica	-6.0%	<div></div>
Numericable	-6.4%	<div></div>
Telekom Austria	-8.4%	<div></div>
Teliasonera	-17.6%	<div></div>
Altice	-23.9%	<div></div>
TDC	-26.7%	<div></div>

### Last 1 Year Performance

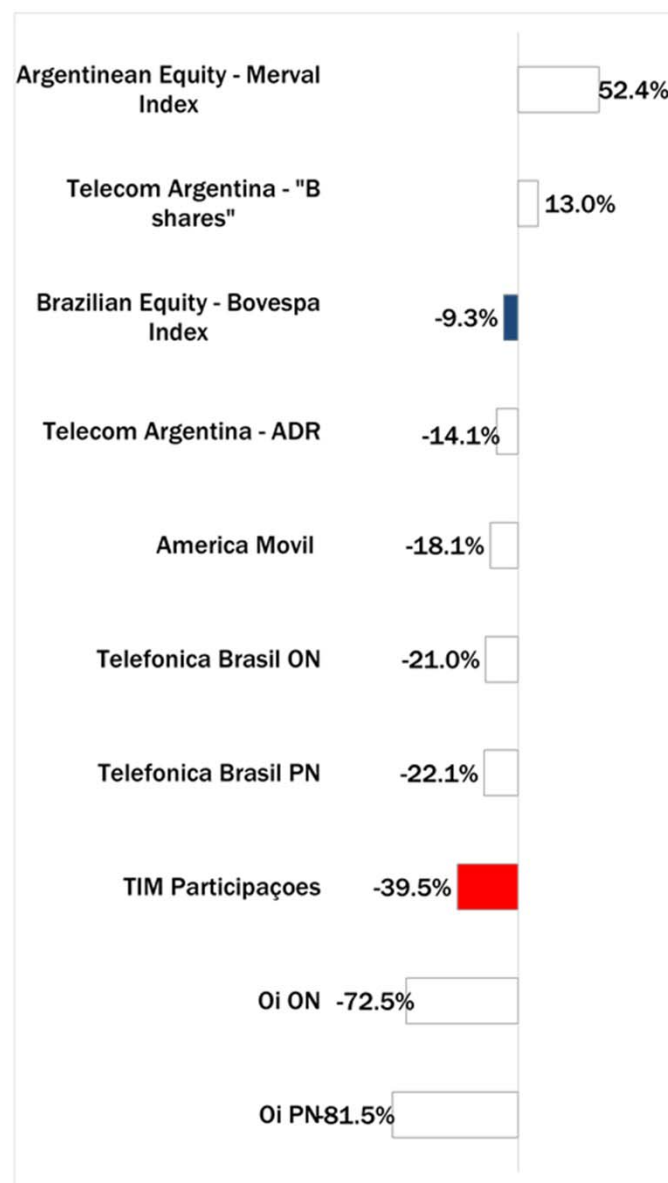
Telecom Italia Sav.	40.8%	<div></div>
KPN	32.3%	<div></div>
Telecom Italia Ord.	25.1%	<div></div>
DT	21.5%	<div></div>
Telefonica Deutschland	18.7%	<div></div>
BT	16.5%	<div></div>
Bouygues	14.1%	<div></div>
Iliad	8.4%	<div></div>
Orange	8.2%	<div></div>
DJStoxx Telecom	7.3%	<div></div>
Numericable	5.7%	<div></div>
Tele2	0.1%	<div></div>
Vodafone Group	-3.6%	<div></div>
Vivendi	-3.9%	<div></div>
Telenor	-4.4%	<div></div>
Proximus	-7.6%	<div></div>
Telekom Austria	-12.1%	<div></div>
Telefonica	-13.2%	<div></div>
Swisscom	-13.5%	<div></div>
Altice	-16.8%	<div></div>
Teliasonera	-20.7%	<div></div>
TDC	-31.8%	<div></div>

# Latam: Stock Performance of Main TLC Operators

## Last Week Performance



## 2015 Year-To-Date Performance



## Last 1 Year Performance



# European Telecoms Sector: Credit Outlook

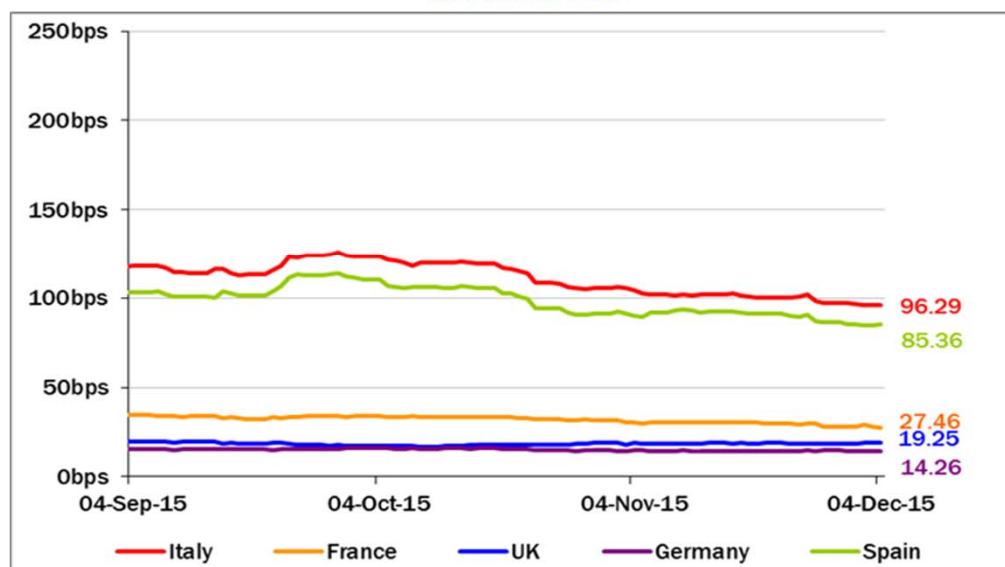


## Long-term Credit Ratings

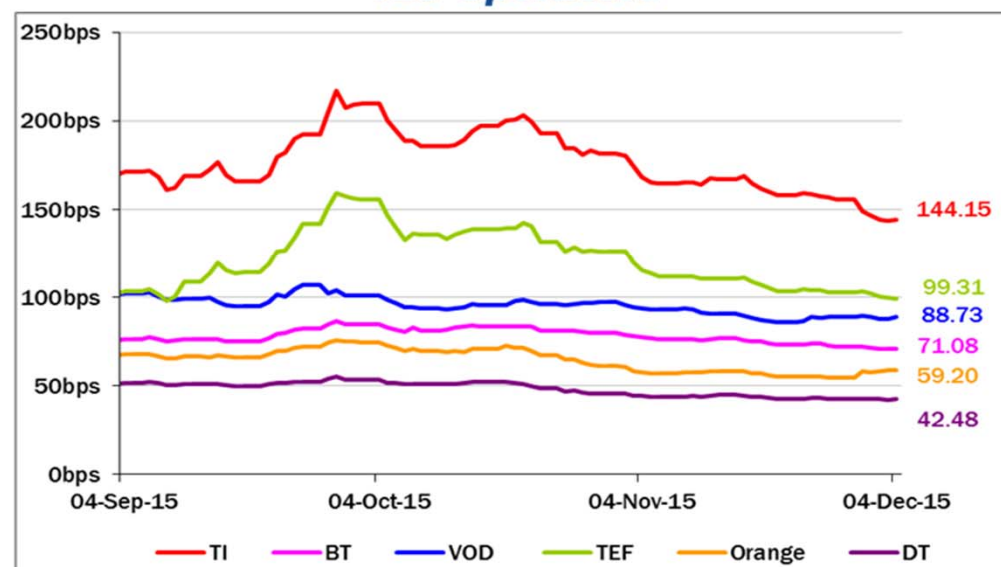
	Moody's		S&P		Fitch	
	rating	outlook	rating	outlook	rating	outlook
<b>TELECOM ITALIA</b>	<b>Ba1</b>	<b>NEG</b>	<b>BB+</b>	<b>STABLE</b>	<b>BBB-</b>	<b>STABLE</b>
PROXIMUS	A1	STABLE	A	STABLE	n.a.	n.a.
BT GROUP	Baa2	POS	BBB	POS	BBB	POS
DEUTSCHE TELEKOM	Baa1	STABLE	BBB+	STABLE	BBB+	STABLE
ORANGE	Baa1	STABLE	BBB+	NEG	BBB+	STABLE
KPN	Baa3	STABLE	BBB-	STABLE	BBB-	POS
OI GROUP	B1	NEG	BB+	NEG	BB	NEG
SWISSCOM	A2	STABLE	A	STABLE	n.a.	n.a.
TELEFONICA	Baa2	STABLE	BBB	POS	BBB+	STABLE
TELEKOM AUSTRIA	Baa2	STABLE	BBB	STABLE	n.a.	n.a.
TELIASONERA	A3	NEG	A-	STABLE	A-	STABLE
TELENOR	A3	STABLE	A	STABLE	n.a.	n.a.
VODAFONE GROUP	Baa1	STABLE	BBB+	STABLE	BBB+	STABLE
WIND TELECOMUNICAZIONI	B2	POS	BB-	POS	B+	STABLE
VIMPELCOM	Ba3	STABLE	BB	POS	n.a.	n.a.

## 5 Years CDS levels

### Countries



### TLC Operators



## Telecom Italia Group – Weekly Performance: Price (€) and Volumes (mln)

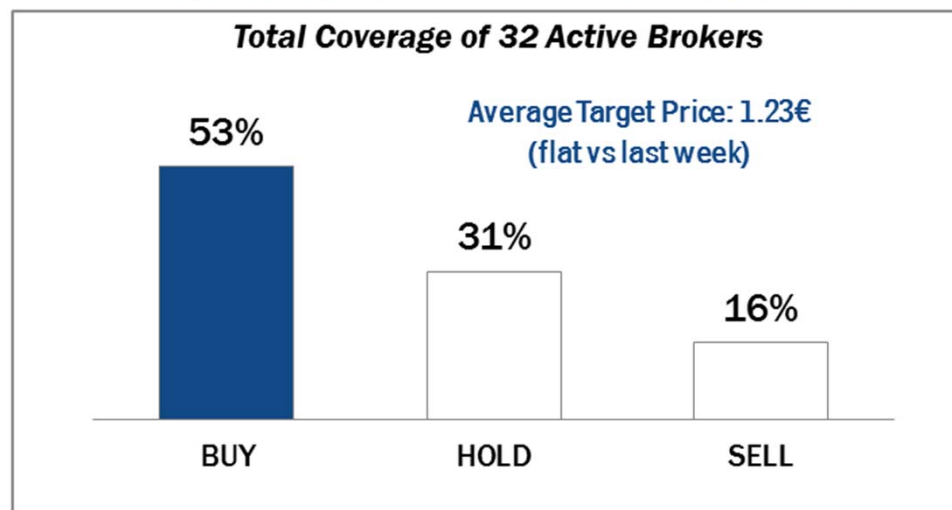
### TI Ordinary Shares



### TI Saving Shares

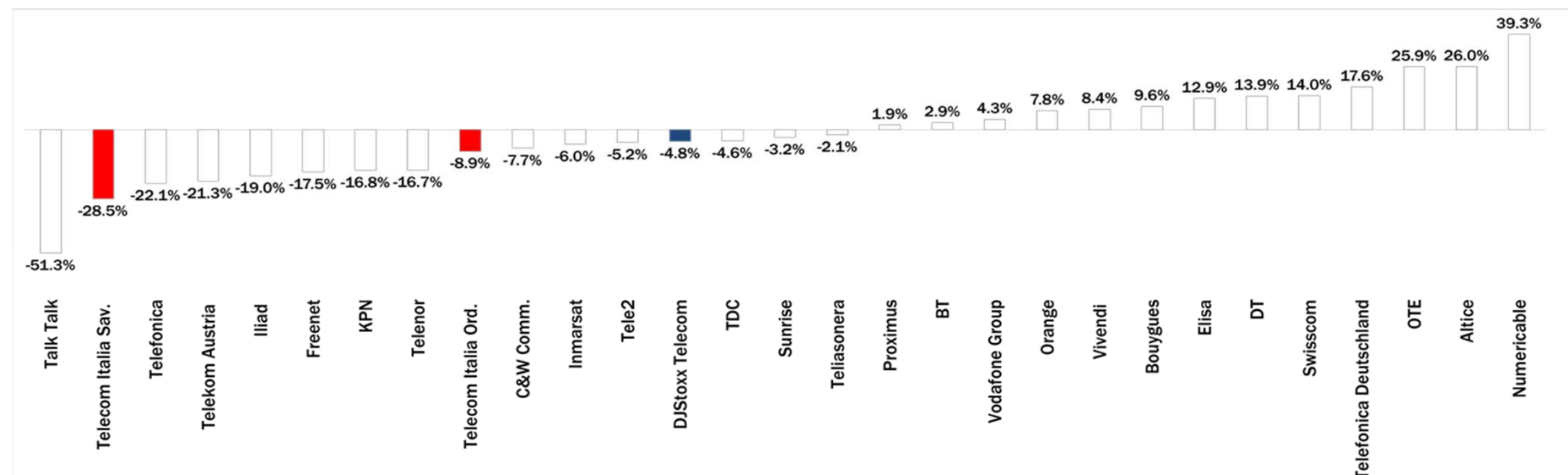


### Analysts' Recommendations on TI Ords

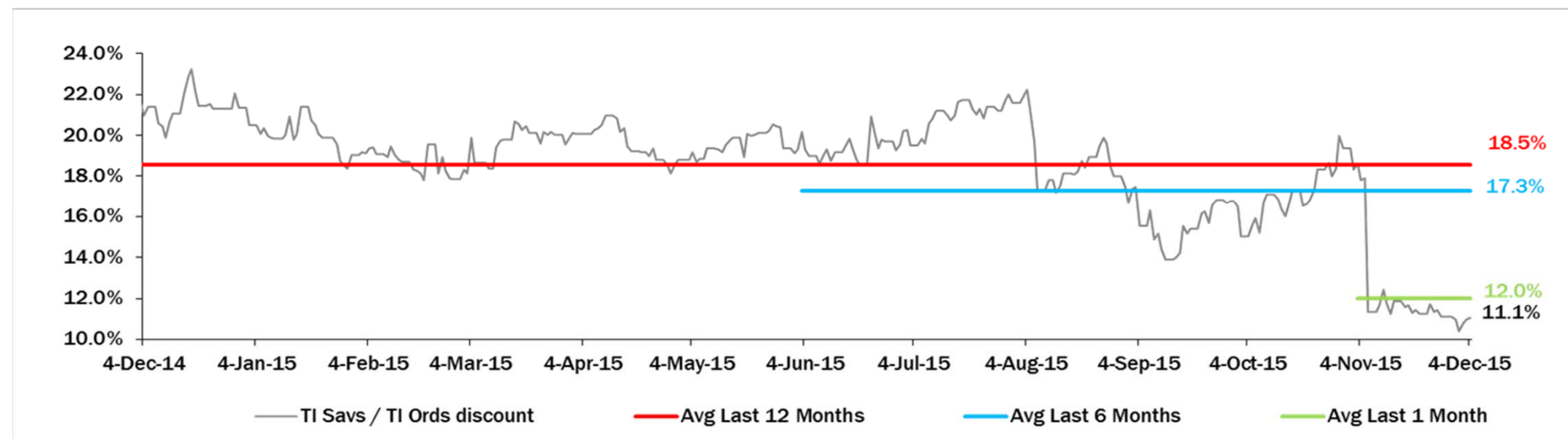




## Weekly Trading Activity: Weekly average volumes vs last 1 month average



## Evolution of the spread (TI Savs /TI Ords ) over the last 12 months





## Performance Summary of Main European TLC Operators



Country	cl. Price (local currency) 04-Dec-15	Performance (Δ%)*						Last 52 weeks		Daily average volume **		Market Cap. (all in €mln)
		1 week	1 month	6 months	1 year	from Jan. '15		Low Price	High Price	1 week	1 month	

## EUROPEAN TLC OPERATORS

## Index

DJStoxx Telecom	EU	350.12	-5.9%	-3.5%	-6.1%	7.3%	9.4%	304.05	399.43	302,187,843	317,346,226	
-----------------	----	--------	-------	-------	-------	------	------	--------	--------	-------------	-------------	--

## TLC Operators

Altice	NL	12.42	-14.5%	-24.8%	-56.5%	-16.8%	-23.9%	12.040	35.800	4,284,976	3,399,997	13,672
Bouygues	FR	34.15	-3.5%	-2.1%	-2.6%	14.1%	13.9%	27.880	39.240	845,858	771,596	11,549
BT	GB	479.35	-4.1%	3.0%	8.3%	16.5%	19.4%	385.600	502.600	14,577,000	14,165,920	55,712
C&W Comm.	GB	76.30	0.7%	3.0%	15.1%	54.0%	53.7%	47.250	79.850	10,651,880	11,535,260	4,631
DT	DE	16.19	-7.4%	-3.7%	2.8%	21.5%	22.2%	12.400	17.625	11,666,060	10,241,250	74,582
Elisa	FI	34.59	-1.7%	1.2%	23.2%	47.5%	53.0%	21.420	35.990	405,200	359,019	5,788
Freenet	DE	30.34	-3.8%	-0.1%	-0.4%	29.2%	28.0%	21.810	33.105	346,157	419,400	3,885
Orange	FR	15.45	-7.0%	-3.4%	6.5%	8.2%	9.2%	12.210	16.975	8,817,440	8,178,045	40,925
OTE	GR	8.65	-7.8%	-2.3%	5.6%	-12.6%	-4.9%	5.750	10.490	759,443	603,032	4,240
Iliad	FR	208.10	-1.1%	7.8%	-1.2%	8.4%	4.7%	173.050	237.950	81,958	101,217	12,194
Inmarsat	GB	1,109.00	-0.4%	13.3%	10.8%	38.4%	38.7%	758.500	1,140.000	1,086,309	1,155,618	6,927
KPN	NL	3.44	-4.4%	4.0%	3.1%	32.3%	32.1%	2.405	3.664	12,205,190	14,666,160	14,685
Numericable	FR	38.31	-5.4%	-8.2%	-24.1%	5.7%	-6.4%	33.740	60.010	361,236	259,363	16,787
Proximus	BE	29.50	-6.8%	-5.8%	-7.8%	-7.6%	-2.0%	28.575	35.880	536,033	526,225	9,972
Sunrise	CH	59.90	-2.0%	9.3%	-24.0%	na	na	48.400	90.000	107,278	110,773	2,479
Swisscom	CH	496.30	-3.3%	-3.3%	-7.5%	-13.5%	-5.0%	474.400	585.000	113,242	99,356	23,640
TalkTalk	GB	236.00	-3.3%	0.0%	-42.3%	-22.6%	-22.4%	210.100	415.100	2,065,934	4,239,533	3,133
TDC	DK	34.61	-6.9%	-7.7%	-33.4%	-31.8%	-26.7%	32.850	54.050	3,566,711	3,738,256	3,767
Tele2	SE	85.35	-2.8%	-3.2%	-15.2%	0.1%	-0.9%	74.850	105.920	1,770,725	1,868,761	4,165
Telecom Italia Ord.	IT	1.167	-5.3%	-4.0%	-1.0%	25.1%	32.3%	0.845	1.316	131,484,100	144,277,600	15,754
Telecom Italia Sav.	IT	1.04	-5.2%	3.9%	9.1%	40.8%	49.7%	0.663	1.122	44,117,060	61,725,120	6,257
Telefonica	ES	11.08	-4.8%	-10.4%	-13.7%	-13.2%	-6.0%	10.375	14.305	32,028,350	41,137,880	53,873
Telefonica Deutschland	DE	5.18	-3.9%	-8.9%	-0.2%	18.7%	17.3%	4.107	5.994	2,974,747	2,528,891	15,396
Telenor	NO	146.70	-4.6%	-7.2%	-18.5%	-4.4%	-3.2%	143.700	186.100	2,023,754	2,428,050	23,806
Telekom Austria	AT	5.05	-3.9%	-10.1%	-21.0%	-12.1%	-8.4%	4.915	6.868	135,279	171,850	3,358
Teliasonera	SE	41.53	-3.0%	-4.2%	-16.8%	-20.7%	-17.6%	39.890	55.850	11,057,840	11,294,780	19,484
Vivendi	FR	19.60	-2.3%	-9.7%	-16.1%	-3.9%	-5.3%	19.045	24.830	5,534,394	5,104,729	26,807
Vodafone Group	GB	215.55	-4.5%	-0.8%	-13.1%	-3.6%	-3.2%	201.250	258.000	47,522,960	45,584,010	79,519

## EUROPEAN TOWERS OPERATORS

Inwit	IT	5.01	1.4%	9.6%	na	na	37.3%	3.650	5.180	2,678,358	1,122,756	3,006
El Towers	IT	57.45	3.9%	4.5%	4.7%	32.1%	38.9%	39.250	59.750	47,453	29,420	1,624
Rai Way	IT	4.99	0.9%	6.4%	13.7%	56.0%	56.4%	2.910	5.450	183,125	136,248	1,357
Cellnex Telecom (Abertis)	ES	16.97	1.7%	7.4%	2.7%	na	21.2%	14.440	17.350	2,021,064	1,737,136	3,932

## Main International Peers

American Towers	US	97.55	-2.1%	-4.6%	3.0%	-4.0%	-1.3%	86.830	104.120	1,679,214	1,830,043	38,016
Crown Castle Intl	US	85.11	-1.1%	-2.6%	1.7%	6.5%	8.1%	74.450	89.435	1,663,088	1,804,531	26,136
SBA Communications	US	108.53	2.0%	-7.7%	-8.1%	-6.2%	-2.0%	101.120	128.470	1,082,652	1,235,893	12,597

\* performance calculated on closing price \*\* n. of traded shares

Source: Bloomberg LP



## Performance Summary of FTSE MIB



	Cl. Price € 04-Dec-15	Performance (Δ%)*					Last 52 weeks		Daily average volume		Market** Cap. mil. Euro
		1 week	1 month	6 months	1 year	from Jan. '15	Low Price	High Price	1 week	1 month	
<b>Index</b>											
<b>FTSEMIB (Milan)</b>	<b>22,021</b>	<b>-2.5%</b>	<b>-1.3%</b>	<b>-5.6%</b>	<b>13.4%</b>	<b>15.8%</b>	<b>17,729</b>	<b>24,157</b>	<b>573,873,478</b>	<b>566,106,614</b>	<b>459,253</b>
<b>FTSE Italia All-Share (Milan)</b>	<b>23,793</b>	<b>-2.1%</b>	<b>-0.9%</b>	<b>-4.6%</b>	<b>15.8%</b>	<b>18.2%</b>	<b>18,795</b>	<b>25,746</b>	<b>736,682,278</b>	<b>808,404,907</b>	<b>564,354</b>
<b>Stoxx FTSEMIB Index</b>											
A2A Spa	1.34	2.1%	9.5%	17.8%	60.2%	59.5%	0.77	1.35	14,304,450	14,448,890	4,186
Anima Holding Spa	8.50	-1.7%	2.3%	6.0%	110.9%	104.1%	3.80	9.87	788,810	1,630,084	2,548
Ansaldo Sts Spa	9.77	-0.3%	0.6%	3.8%	15.7%	17.2%	7.95	9.83	466,541	619,622	1,953
Atlantia Spa	23.84	-3.8%	-4.4%	4.6%	20.7%	23.3%	18.05	25.74	2,501,154	2,433,780	19,687
Azimut Holding Spa	23.36	-2.3%	9.4%	-9.1%	36.3%	32.6%	16.28	29.58	1,195,955	1,199,693	3,346
Banca Monte Dei Paschi Siena	1.38	-7.1%	-14.6%	-24.9%	-43.1%	-27.6%	1.36	2.64	54,755,720	41,547,310	4,058
Banca Popol. Emilia Romagna	7.21	-0.6%	2.6%	-8.7%	30.3%	31.9%	4.70	8.65	2,811,056	2,848,285	3,470
Banca Popolare Di Milano	0.93	1.2%	9.9%	-2.3%	61.1%	71.2%	0.50	1.04	34,860,620	39,676,990	4,080
Banco Popolare Sc	13.04	-4.2%	0.2%	-14.0%	23.0%	29.6%	8.71	16.55	2,257,626	2,650,223	4,723
Buzzi Unicem Spa	16.53	-3.6%	7.7%	21.0%	47.3%	57.3%	9.50	17.79	832,639	953,674	3,151
Davide Campari-Milano Spa	7.97	-3.2%	2.7%	16.0%	44.9%	54.5%	4.89	8.52	1,828,531	1,747,518	4,629
Orin Industrial NV	6.69	-2.1%	3.2%	-17.2%	6.4%	-0.1%	5.66	8.92	5,483,463	5,624,609	9,181
Enel Spa	4.07	-2.1%	-3.2%	-4.6%	7.4%	10.1%	3.36	4.50	42,416,300	41,285,530	38,253
Enel Green Power Spa	1.95	-1.8%	-0.1%	10.1%	4.3%	12.7%	1.56	2.04	16,724,910	23,450,520	9,770
Eni Spa	14.61	-4.6%	-1.9%	-8.6%	-4.6%	0.7%	12.98	17.66	15,785,870	16,816,430	53,095
Exor Spa	41.54	-0.1%	-7.2%	-6.8%	19.0%	22.0%	32.18	47.18	463,239	594,007	10,228
Fiat Chrysler Automobiles NV	12.80	-5.2%	-2.1%	-11.2%	20.5%	33.3%	9.00	16.29	11,409,210	12,413,140	16,650
Fimmeccanica Spa	13.41	-2.2%	11.9%	9.8%	74.8%	73.4%	7.08	13.94	3,242,051	3,776,913	7,753
Assicurazioni Generali	17.34	-2.6%	-0.3%	0.2%	1.9%	2.0%	15.16	19.21	7,809,010	6,044,301	26,996
Intesa Sanpaolo	3.17	-1.5%	2.9%	-4.1%	34.4%	30.7%	2.22	3.65	86,682,310	85,990,730	52,912
Italcementi Spa	10.23	-0.3%	1.1%	57.1%	105.1%	107.1%	4.41	10.28	1,230,226	1,132,390	3,573
Luxottica Group Spa	62.05	-1.0%	-0.7%	2.2%	44.5%	38.1%	41.70	67.80	702,930	669,550	30,007
Mediaset Spa	4.13	-1.7%	-10.7%	-6.8%	30.8%	20.2%	3.15	4.93	6,176,084	8,992,613	4,883
Mediobanca Spa	9.00	-0.4%	-2.3%	-4.9%	28.1%	32.9%	6.26	10.15	3,501,609	3,685,255	7,802
Mediobanca SpA	7.77	0.5%	5.3%	-1.1%	47.3%	46.8%	4.84	8.48	2,165,839	2,060,499	5,737
Moncler Spa	14.95	6.0%	-2.3%	-13.4%	34.0%	34.4%	10.32	19.00	2,102,466	1,505,024	3,739
Physrian Spa	20.06	-2.5%	-0.4%	-1.3%	39.0%	32.4%	13.99	22.35	1,260,028	1,273,807	4,347
Saipem Spa	7.76	-4.6%	-11.0%	-24.3%	-21.9%	-11.5%	6.86	12.85	2,894,765	5,027,332	3,423
Salvatore Ferragamo Spa	22.28	4.2%	-10.3%	-20.5%	7.7%	9.2%	18.87	32.55	1,122,683	1,030,842	3,761
Snam Spa	4.90	1.4%	0.6%	11.2%	18.5%	19.5%	3.81	5.01	18,904,000	13,400,180	17,146
Stmicroelectronics NV	6.74	-1.7%	4.4%	-12.3%	11.4%	8.7%	5.57	9.60	4,999,982	5,368,038	6,135
<b>Telecom Italia Spa</b>	<b>1.167</b>	<b>-5.3%</b>	<b>-4.0%</b>	<b>-1.0%</b>	<b>25.1%</b>	<b>32.3%</b>	<b>0.845</b>	<b>1.316</b>	<b>131,484,100</b>	<b>144,277,600</b>	<b>22,011</b>
Tenaris Sa	11.27	-6.9%	-3.7%	-12.6%	-12.6%	-9.6%	9.96	15.34	4,534,572	4,575,238	13,305
Terna Spa	4.69	0.9%	0.7%	9.8%	22.0%	24.7%	3.54	4.86	10,488,010	9,453,459	9,427
Tod's Spa	76.05	-0.3%	-3.8%	-10.2%	8.8%	5.6%	65.05	98.00	155,923	169,083	2,328
Ubi Banca Spa	6.13	-4.4%	-6.9%	-18.2%	2.3%	2.8%	5.18	7.88	5,400,771	5,121,147	5,523
Unicredit Spa	5.37	-3.2%	-8.1%	-17.5%	-4.9%	0.6%	4.82	6.61	42,044,060	45,556,200	32,035
Unipol Gruppo Finanziario Sp	4.66	-1.0%	9.3%	-6.0%	13.7%	13.1%	3.80	5.45	2,726,352	2,764,387	3,343
Unipol Sai Spa	2.39	-1.2%	6.2%	-3.2%	7.9%	7.0%	1.88	2.80	10,069,610	9,788,033	6,645
Yox Net-A-Porter Group	35.60	12.7%	14.2%	18.3%	93.6%	93.5%	15.51	35.79	1,446,284	831,294	4,632

\*\* for FTSEMIB stocks, market cap here reported on overall shares outstanding