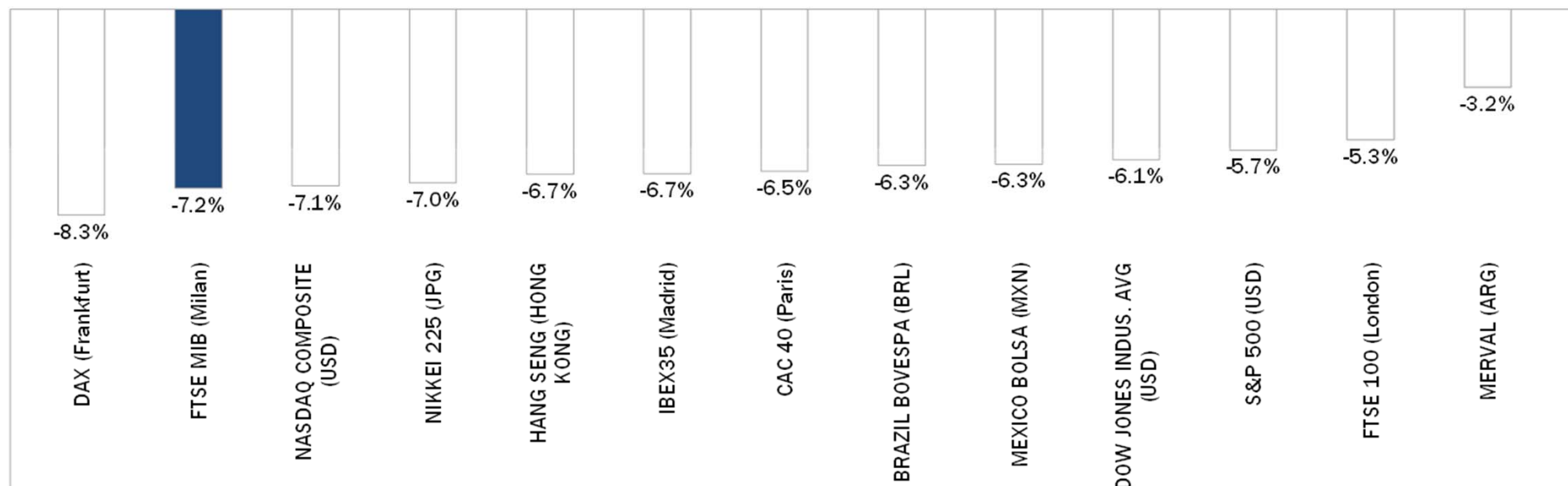


# Weekly Stock Market Report for Telecom Italia Retail Shareholders

January 4th – January 8th, 2016

# Weekly Performance of Major Worldwide Market Stock Exchanges

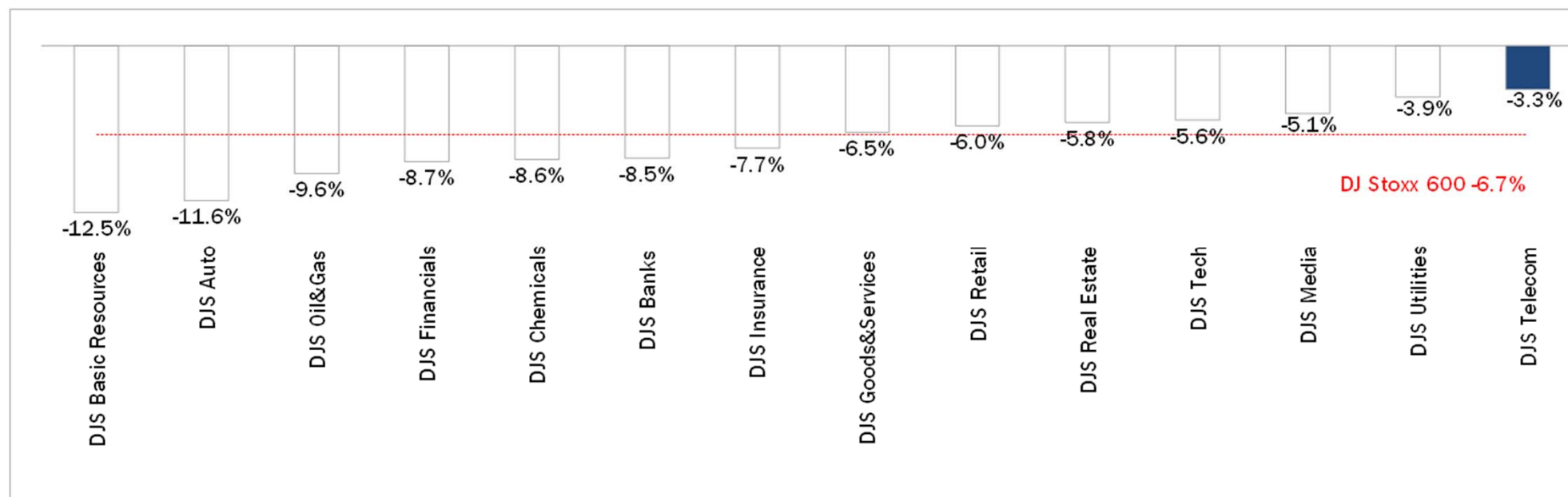


	Index Point as of 08-Jan-16	Performance (Δ%)*					Last 52 weeks		Daily average volume **		Market Cap. (mln. local cur.)
		1 week	1 month	6 months	1 year	from Jan. '16	Low Price	High Price	1 week	1 month	
Europe											
FTSE MIB (Milan)	19,869	-7.2%	-7.7%	-7.6%	5.7%	-7.2%	18,032	24,157	509,864,042	512,143,923	423,230
FTSE 100 (London)	5,912	-5.3%	-3.6%	-8.9%	-10.0%	-5.3%	5,768	7,123	668,101,107	657,924,476	1,667,632
DAX (Frankfurt)	9,849	-8.3%	-7.7%	-8.4%	0.1%	-8.3%	9,325	12,391	91,693,949	91,584,109	985,976
CAC 40 (Paris)	4,334	-6.5%	-7.4%	-6.6%	1.7%	-6.5%	4,119	5,284	104,664,204	121,851,577	1,181,360
IBEX35 (Madrid)	8,909	-6.7%	-9.4%	-14.6%	-11.9%	-6.7%	8,890	11,885	440,482,085	390,151,754	533,729
America											
DOW JONES INDUS. AVG (USD)	16,346	-6.1%	-6.8%	-6.6%	-8.6%	-6.1%	15,370	18,351	128,829,914	116,143,063	4,999,533
S&P 500 (USD)	1,922	-5.7%	-6.6%	-5.8%	-6.5%	-5.7%	1,867	2,135	700,092,122	642,662,098	17,697,370
NASDAQ COMPOSITE (USD)	4,644	-7.1%	-8.8%	-5.3%	-1.8%	-7.1%	4,292	5,232	494,651,187	450,766,629	7,119,110
MEXICO BOLSA (MXN)	40,265	-6.3%	-4.6%	-9.5%	-5.0%	-6.3%	39,257	46,078	165,337,072	210,838,878	1,924,803
MERVAL (ARG)	11,306	-3.2%	-13.5%	-1.8%	34.7%	-3.2%	8,146	14,597	6,272,449	8,545,722	11,391
BRAZIL BOVESPA (BRL)	40,612	-6.3%	-8.6%	-21.6%	-18.7%	-6.3%	40,463	58,575	332,384,800	344,582,574	1,355,768
Asia											
NIKKEI 225 (JPG)	17,698	-7.0%	-8.0%	-10.5%	2.9%	-7.0%	16,593	20,953	1,534,030,438	1,348,649,559	326,382,400
HANG SENG (HONG KONG)	20,454	-6.7%	-4.7%	-17.9%	-14.5%	-6.7%	20,324	28,589	2,042,899,072	1,560,985,667	12,638,698

\* performance calculated on closing price; \*\* n. of traded shares

Source: Bloomberg LP

# Weekly Performance of Major European Sectors



Index	Index Point as of 08-Jan-16	Performance (Δ%)*					Last 52 weeks		Daily average volume **		Market Cap (mln. local cur.)
		1 week	1 month	6 months	1 year	from Jan. '16	Low Price	High Price	1 week	1 month	
DJ Stoxx 600	341.35	-6.7%	-6.7%	-8.5%	-0.3%	-6.7%	331.98	415.18	2,346,325,069	2,417,694,893	9,016,886.00
<b>Sectors</b>											
DJS Telecom	335.68	-3.3%	-3.5%	-5.9%	4.9%	-3.3%	311.57	399.43	245,501,354	258,655,680	464,741.47
DJS Auto	499.35	-11.6%	-10.6%	-14.1%	-0.8%	-11.6%	440.4	694.29	40,456,576	30,967,788	285,983.09
DJS Banks	167.18	-8.5%	-8.2%	-18.0%	-9.3%	-8.5%	167.18	227.47	988,301,578	987,919,579	1,106,699.75
DJS Basic Resources	214.27	-12.5%	-10.4%	-38.9%	-42.6%	-12.5%	214.27	437.1	122,948,758	143,406,867	149,772.28
DJS Chemicals	754.84	-8.6%	-8.5%	-14.1%	-5.1%	-8.6%	754.48	999.46	19,250,782	18,988,123	376,296.94
DJS Oil&Gas	237.09	-9.6%	-10.1%	-20.5%	-15.4%	-9.6%	237.09	347.07	121,991,347	128,345,346	468,097.47
DJS Financials	408.78	-8.7%	-8.0%	-5.3%	8.9%	-8.7%	366.78	483.43	26,291,429	25,001,360	169,616.11
DJS Goods&Services	400.75	-6.5%	-7.6%	-8.0%	-1.4%	-6.5%	387.3	494.3	132,932,642	153,051,125	930,636.25
DJS Insurance	263.59	-7.7%	-8.2%	-1.4%	5.2%	-7.7%	244.33	308.93	95,092,431	109,193,446	531,654.19
DJS Media	289.66	-5.1%	-4.9%	-5.2%	6.8%	-5.1%	266.14	339.86	42,569,752	45,734,690	278,094.78
DJS Tech	335.94	-5.6%	-5.6%	1.5%	8.4%	-5.6%	284.27	379.24	53,704,976	71,650,840	343,420.19
DJS Utilities	292.08	-3.9%	-2.4%	-4.5%	-5.6%	-3.9%	278.31	342.48	185,122,663	175,767,183	409,802.25
DJS Retail	316.35	-6.0%	-8.4%	-7.3%	1.0%	-6.0%	303.66	383.51	103,590,976	92,195,372	354,118.06
DJS Real Estate	172.66	-5.8%	-6.6%	-2.0%	3.6%	-5.8%	164.84	201.27	19,852,978	20,674,105	156,242.94

\* performance calculated on closing price. \*\* n. of traded shares.

Source: Bloomberg LP



# Europe: Stock Performance of Main TLC Operators



## Last Week Performance

Numericable	13.4%
Altice	7.4%
Iliad	3.2%
Vodafone Group	0.9%
Proximus	0.4%
Telekom Austria	-0.6%
Telenor	-0.8%
Orange	-1.2%
TDC	-1.3%
BT	-1.3%
Bouygues	-2.3%
Swisscom	-2.9%
DJStoxx Telecom	-3.3%
Telefonica Deutschland	-3.6%
KPN	-4.4%
Tele2	-5.2%
Vivendi	-5.6%
DT	-5.6%
Teliasonera	-6.0%
Telefonica	-6.3%
Telecom Italia Sav.	-7.7%
Telecom Italia Ord.	-8.3%

## Last 6 Month Performance

Iliad	18.7%
Bouygues	15.3%
Orange	14.5%
BT	5.8%
DT	5.1%
KPN	3.3%
Vodafone Group	-2.6%
Proximus	-2.8%
Telecom Italia Sav.	-2.8%
Telefonica Deutschland	-3.2%
Telecom Italia Ord.	-5.3%
DJStoxx Telecom	-5.9%
Swisscom	-6.7%
Telekom Austria	-11.5%
Tele2	-13.0%
Telenor	-13.9%
Numericable	-13.9%
Vivendi	-16.0%
Teliasonera	-16.2%
Telefonica	-22.0%
TDC	-31.1%
Altice	-49.5%

## 2015 Full Year Performance

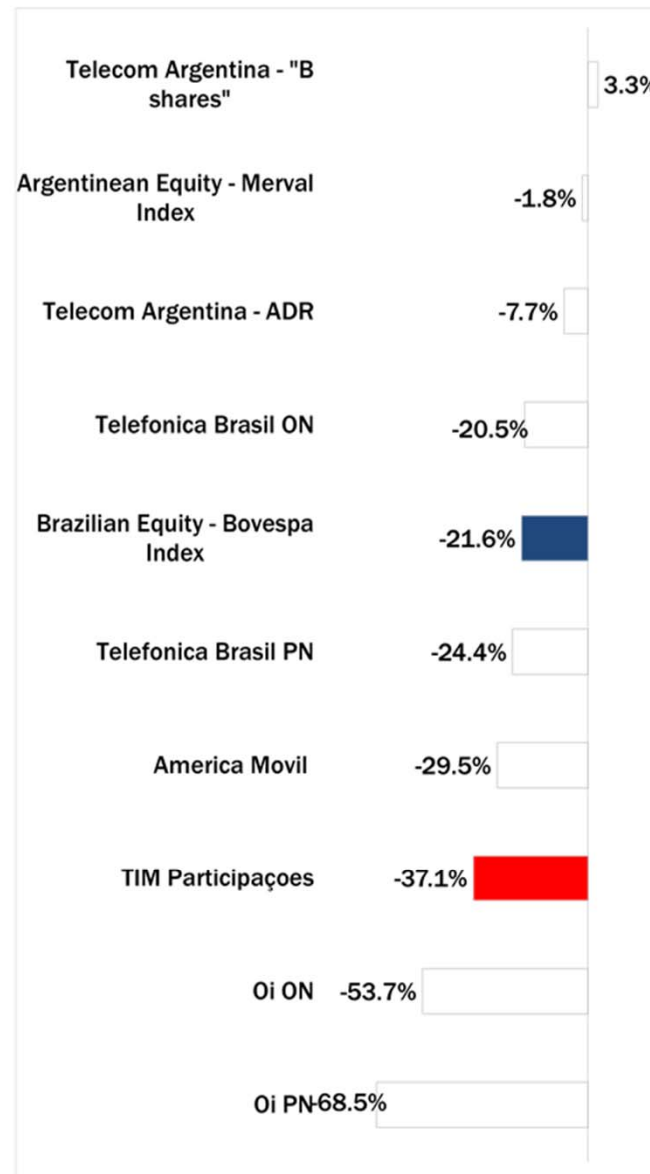
Telecom Italia Sav.	37.1%
KPN	34.2%
Telecom Italia Ord.	33.2%
DT	26.0%
Bouygues	22.5%
BT	16.9%
Iliad	13.0%
Telefonica Deutschland	10.8%
Orange	10.3%
DJStoxx Telecom	8.9%
Proximus	-0.4%
Vodafone Group	-1.6%
Telenor	-2.1%
Swisscom	-3.7%
Vivendi	-4.1%
Telekom Austria	-8.6%
Tele2	-10.7%
Telefonica	-11.1%
Teliasonera	-16.3%
Numericable	-17.2%
Altice	-19.9%
TDC	-27.2%

# Latam: Stock Performance of Main TLC Operators

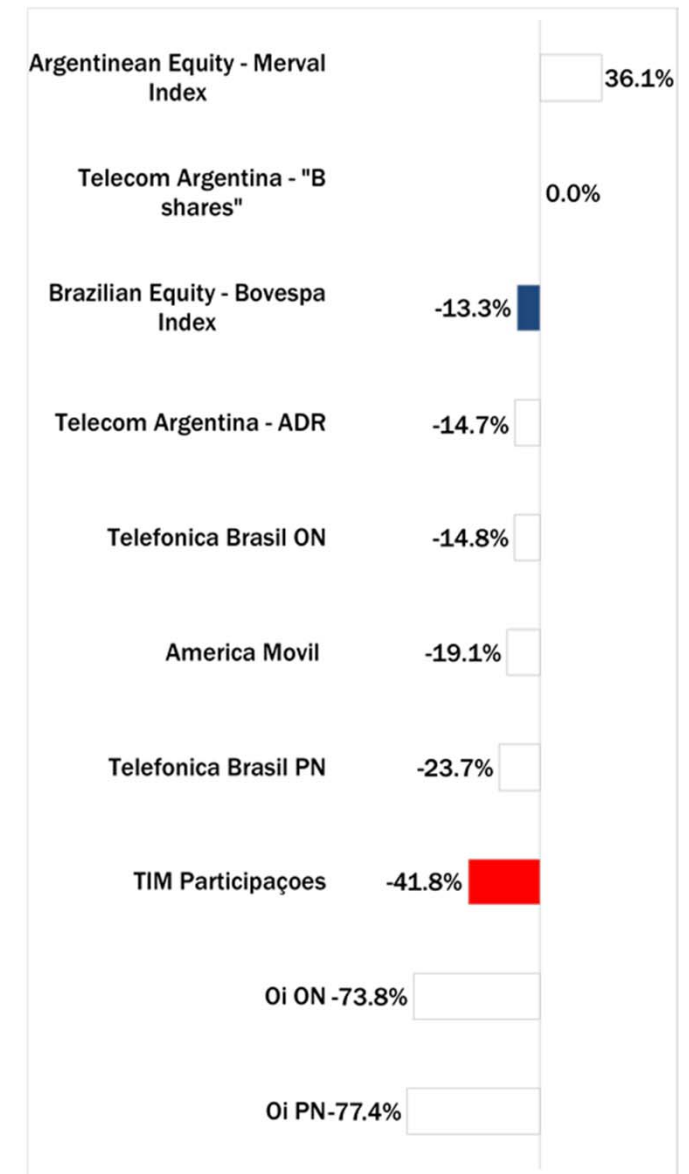
## Last Week Performance



## Last 6 Month Performance



## 2015 Full Year Performance



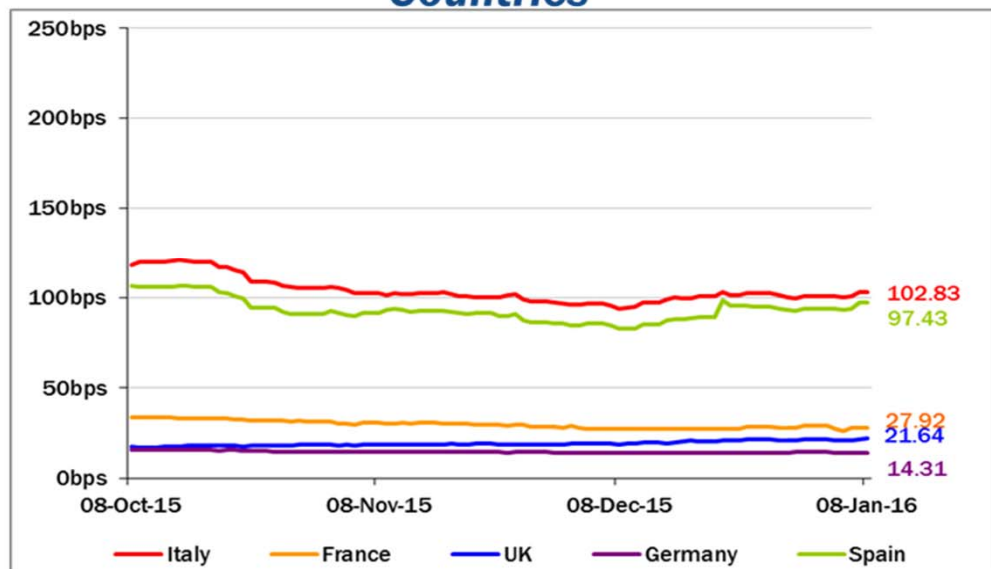
# European Telecoms Sector: Credit Outlook

## Long-term Credit Ratings

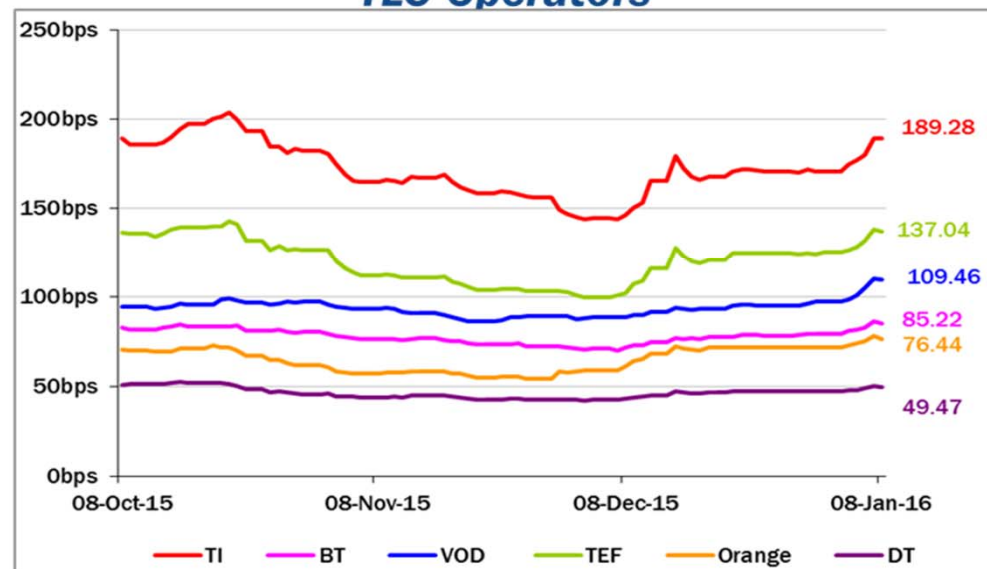
	Moody's		S&P		Fitch	
	rating	outlook	rating	outlook	rating	outlook
<b>TELECOM ITALIA</b>	<b>Ba1</b>	<b>NEG</b>	<b>BB+</b>	<b>STABLE</b>	<b>BBB-</b>	<b>STABLE</b>
PROXIMUS	A1	STABLE	A	STABLE	n.a.	n.a.
BT GROUP	Baa2	POS	BBB	POS	BBB	POS
DEUTSCHE TELEKOM	Baa1	STABLE	BBB+	STABLE	BBB+	STABLE
ORANGE	Baa1	STABLE	BBB+	NEG	BBB+	STABLE
KPN	Baa3	STABLE	BBB-	STABLE	BBB-	POS
OI GROUP	B1	NEG	BB+	NEG	BB	NEG
SWISSCOM	A2	STABLE	A	STABLE	n.a.	n.a.
TELEFONICA	Baa2	STABLE	BBB	POS	BBB+	STABLE
TELEKOM AUSTRIA	Baa2	STABLE	BBB	STABLE	n.a.	n.a.
TELIASONERA	A3	NEG	A-	STABLE	A-	STABLE
TELENOR	A3	STABLE	A	STABLE	n.a.	n.a.
VODAFONE GROUP	Baa1	STABLE	BBB+	STABLE	BBB+	STABLE
WIND TELECOMUNICAZIONI	B2	POS	BB-	POS	B+	STABLE
VIMPELCOM	Ba3	STABLE	BB	POS	n.a.	n.a.

## 5 Years CDS levels

### Countries



### TLC Operators

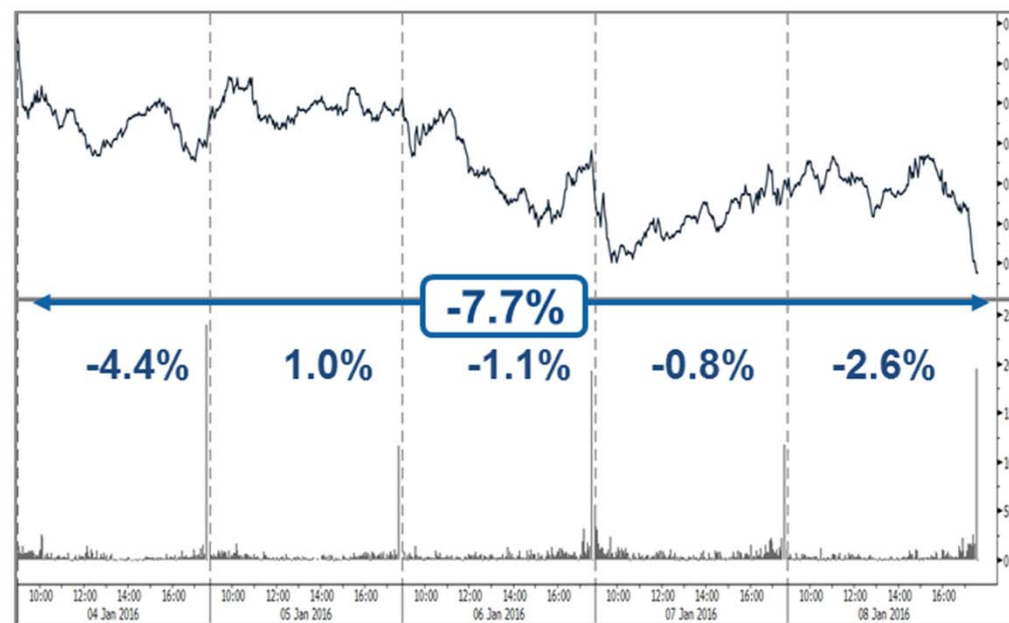


## Telecom Italia Group – Weekly Performance: Price (€) and Volumes (mln)

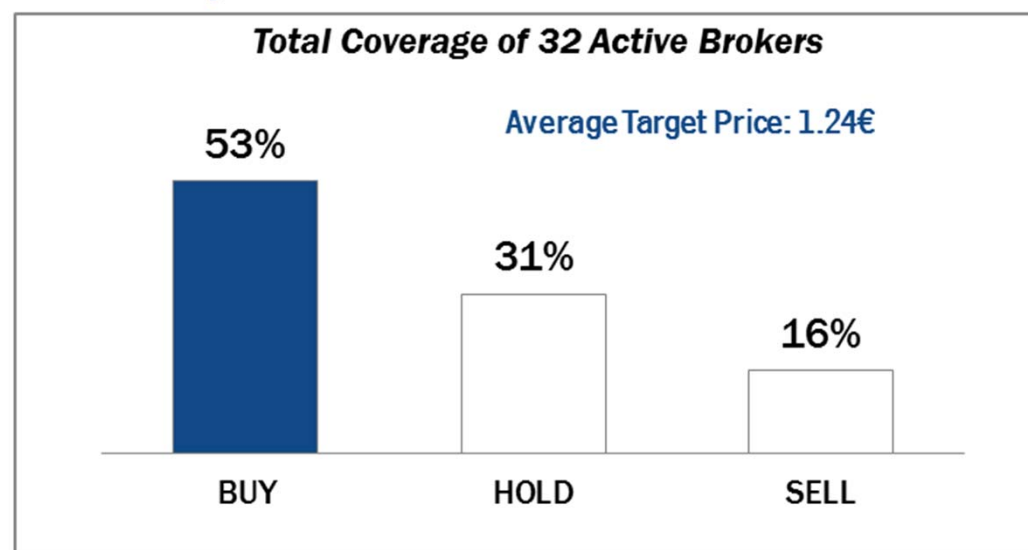
**TI Ordinary Shares**



**TI Saving Shares**

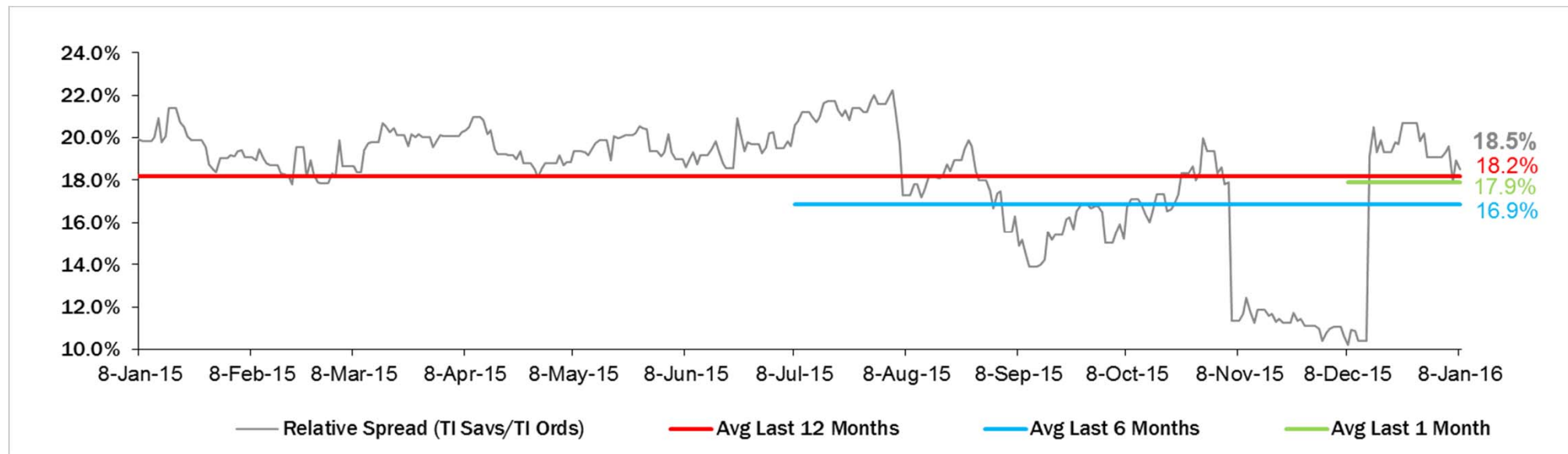


### Analysts' Recommendations on TI Ords

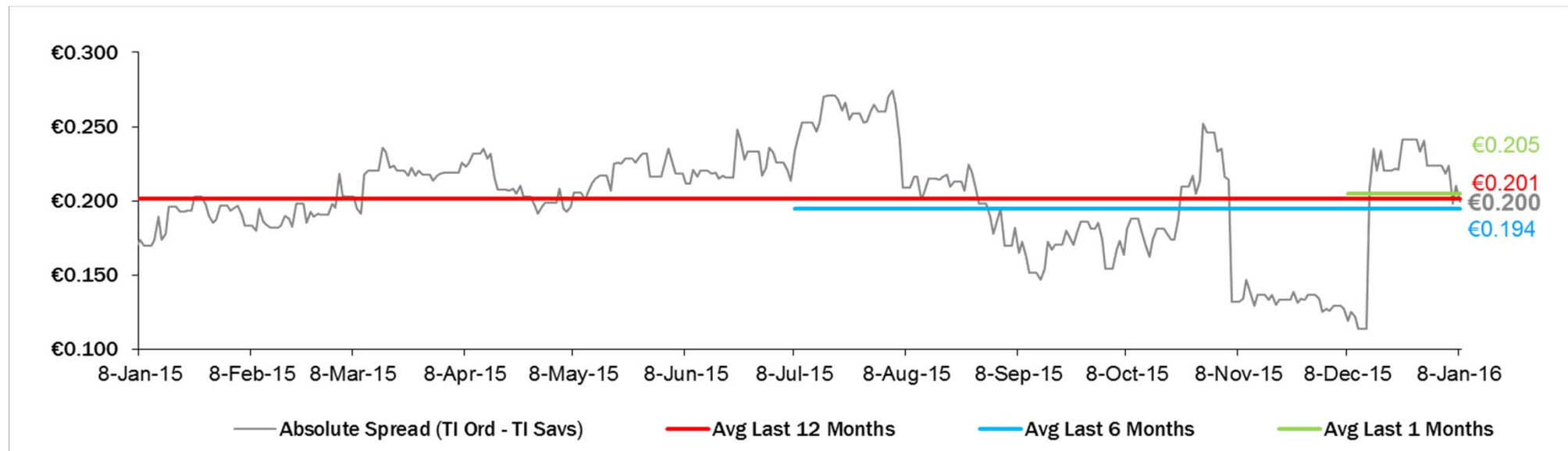




## Relative Spread (TI Savs / TI Ords): Evolution over the Last 12 Months



## Absolute Spread (TI Ords – TI Savs): Evolution over the Last 12 Months





# Performance Summary of Main European TLC Operators



Country	Last Price 08 Jan '16	Performance (Δ%)*					Last 52 weeks		Daily average volume **		Market Cap. (all in €m)
		1 week	1 month	6 months	1 year	from Jan. '16	Low Price	High Price	1 week	1 month	

## EUROPEAN TLC OPERATORS

### Index

DJStoxx Telecom	EU	335.68	-3.3%	-3.5%	-5.9%	4.9%	-3.3%	311.57	399.43	245,501,354	258,655,680
-----------------	----	--------	-------	-------	-------	------	-------	--------	--------	-------------	-------------

### TLC Operators

Altice	NL	14.23	7.4%	15.0%	-49.5%	-6.7%	7.4%	9.975	35.800	2,693,196	3,076,200	15,606
Bouygues	FR	35.72	-2.3%	2.6%	15.3%	19.4%	-2.3%	29.215	39.240	1,156,468	953,610	12,327
BT	GB	465.65	-1.3%	-1.5%	5.8%	16.6%	-1.3%	390.500	502.600	10,420,130	11,961,380	51,946
C&V Comm	GB	74.10	-0.3%	-3.3%	14.6%	50.6%	-0.3%	48.280	79.850	25,251,670	10,031,340	4,316
DT	DE	15.76	-5.6%	-3.4%	5.1%	15.6%	-5.6%	13.160	17.625	11,233,440	10,796,760	72,578
Elisa	FI	34.72	-0.2%	0.9%	23.6%	52.1%	-0.2%	22.700	35.990	338,934	348,048	5,810
Freenet	DE	29.86	-4.7%	-2.2%	3.5%	24.3%	-4.7%	23.740	33.105	351,059	329,746	3,823
Orange	FR	15.30	-1.2%	-0.6%	14.5%	7.7%	-1.2%	12.210	16.975	8,810,369	7,459,895	40,528
OTE	GR	8.80	0.0%	2.7%	7.3%	4.3%	-4.8%	5.750	9.470	466,935	777,346	4,313
Iliad	FR	226.95	3.2%	6.9%	18.7%	13.5%	3.2%	173.050	237.950	133,588	87,165	13,313
Inmarsat	GB	1,106.00	-2.7%	-1.3%	23.6%	36.0%	-2.7%	799.500	1,153.000	759,022	1,070,052	6,630
KPN	NL	3.34	-4.4%	-1.6%	4.3%	31.2%	-4.4%	2.405	3.664	9,365,070	10,167,330	14,263
Numericable	FR	38.00	13.4%	19.8%	1.5%	14.6%	13.4%	28.115	50.896	251,447	279,975	16,653
Proximus	BE	30.13	0.4%	2.7%	-2.8%	2.9%	0.4%	27.860	35.880	422,485	512,165	10,185
Sunrise	CH	59.25	0.3%	1.2%	-21.9%	na	na	48.400	90.000	82,997	92,336	2,455
Swisscom	CH	488.30	-2.9%	-1.1%	-6.7%	-5.6%	-2.9%	471.100	580.500	124,134	122,164	23,292
TalkTalk	GB	209.50	-3.6%	-9.9%	-43.8%	-32.5%	-3.6%	204.600	415.100	1,106,792	1,639,928	2,669
TDC	DK	33.95	-1.3%	-0.1%	-31.1%	-27.9%	-1.3%	31.690	54.050	2,386,761	2,786,142	3,695
Tele2	SE	80.95	-5.2%	-5.0%	-13.0%	-4.6%	-4.5%	74.850	105.920	1,683,968	1,787,096	3,945
Telecom Italia Ord.	IT	1.077	-8.3%	-7.5%	-5.3%	23.1%	-8.3%	0.845	1.316	70,472,920	101,987,200	14,539
Telecom Italia Sav.	IT	0.88	-7.7%	-16.0%	-2.8%	25.2%	-7.7%	0.675	1.122	15,346,320	44,105,360	5,289
Telefonica	ES	9.59	-6.3%	-11.9%	-22.0%	-16.8%	-6.3%	9.574	14.305	26,240,770	29,725,460	47,722
Telefonica Deutschland	DE	4.71	-3.6%	-8.7%	-3.2%	5.6%	-3.6%	4.412	5.994	1,841,058	2,135,934	14,019
Telenor	NO	147.10	-0.8%	-0.5%	-13.9%	-5.9%	-0.8%	138.700	186.100	1,819,533	1,962,474	22,817
Telekom Austria	AT	5.07	-0.6%	0.2%	-11.5%	-7.1%	0.5%	4.805	6.868	416,356	545,021	3,369
TeliaSonera	SE	40.06	-6.0%	-2.9%	-16.2%	-21.9%	-5.0%	38.190	55.850	13,276,660	12,788,670	18,682
Vivendi	FR	18.75	-5.6%	-3.5%	-16.0%	-7.6%	-5.6%	18.550	24.830	5,081,209	4,957,751	25,646
Vodafone Group	GB	223.05	0.9%	2.9%	-2.6%	-1.2%	0.9%	201.250	258.000	61,425,580	49,985,930	78,979

## EUROPEAN TOWERS OPERATORS

Inwit	IT	5.04	-0.1%	0.3%	25.9%	37.9%	37.9%	3.650	5.180	604,827	1,191,202	3,021
El Towers	IT	55.65	-6.5%	-2.8%	7.6%	30.6%	-6.5%	40.000	59.750	23,944	34,517	1,573
Rai Way	IT	4.58	-2.8%	-10.7%	8.7%	44.2%	-2.8%	3.130	5.450	57,843	119,955	1,247
Cellnex Telecom (Abertis)	ES	16.51	-4.2%	-2.6%	9.3%	na	17.9%	14.440	17.500	1,037,794	2,089,544	3,825

\* performance calculated on closing price

\*\* n. of traded shares

Source: Bloomberg LP



## Performance Summary of FTSE MIB



Index	Q. Price € 08-Jan-16	Performance (Δ%)*					Last 52 weeks		Daily average volume		Market** Cap mil. Euro
		1 week	1 month	6 months	1 year	from Jan. '16	Low Price	High Price	1 week	1 month	
<b>FTSEMIB (Milan)</b>	<b>19,869</b>	<b>-7.2%</b>	<b>-7.7%</b>	<b>-7.6%</b>	<b>5.7%</b>	<b>-7.2%</b>	<b>18,032</b>	<b>24,157</b>	<b>509,864,042</b>	<b>512,143,923</b>	<b>423,230</b>
<b>FTSE Italia All-Share (Milan)</b>	<b>21,611</b>	<b>-7.0%</b>	<b>-7.3%</b>	<b>-5.9%</b>	<b>8.5%</b>	<b>-7.0%</b>	<b>19,184</b>	<b>25,746</b>	<b>665,525,805</b>	<b>677,369,218</b>	<b>526,689</b>
<b>Stocks FTSE MIB Index</b>											
A2A Spa	1.24	-1.5%	-6.4%	16.5%	49.3%	-1.5%	0.79	1.37	10,457,300	12,815,980	3,869
Anima Holding Spa	7.20	-10.2%	-15.1%	-2.4%	77.3%	-10.2%	3.80	9.87	1,082,456	950,691	2,159
Atlantia Spa	23.16	-5.5%	-2.1%	10.2%	16.7%	-5.5%	19.71	25.74	1,397,825	1,929,929	19,125
Aziut Holding Spa	20.20	-12.4%	-12.8%	-17.4%	13.8%	-12.4%	17.09	29.58	864,260	862,723	2,894
Banca Mediocredito Centrale	6.27	-14.3%	-18.3%	-11.8%	18.8%	-14.3%	5.00	8.48	2,554,728	1,551,652	4,628
Banca Monte Dei Paschi Siena	1.04	-15.3%	-17.9%	-30.7%	-50.8%	-15.3%	1.01	2.64	48,705,230	49,343,150	3,058
Banca Popolare Emilia Romagna	6.27	-11.0%	-9.6%	-15.9%	19.6%	-11.0%	4.70	8.65	1,803,399	2,355,789	3,015
Banca Popolare Di Milano	0.81	-11.6%	-9.7%	-8.0%	46.4%	-11.6%	0.53	1.04	27,043,770	32,130,180	3,575
Banco Popolare Sc	11.15	-13.0%	-10.7%	-19.4%	13.4%	-13.0%	8.71	16.55	1,154,483	1,675,208	4,038
Buzzi Unicem Spa	15.20	-8.4%	-7.3%	20.6%	48.0%	-8.4%	9.50	17.79	728,660	685,637	2,891
Davide Campari-Milano Spa	7.57	-5.4%	-6.2%	12.9%	42.6%	-5.4%	5.20	8.52	1,088,700	1,384,982	4,394
Eni Industrial Nv	5.75	-9.4%	-13.2%	-29.0%	-11.7%	-9.4%	5.66	8.92	3,846,626	4,499,121	7,844
Enel Spa	3.74	-3.9%	-6.2%	-5.5%	2.7%	-3.9%	3.36	4.50	38,596,320	37,363,670	35,187
Enel Green Power Spa	1.81	-4.1%	-5.6%	1.6%	4.2%	-4.1%	1.56	2.04	11,338,510	11,453,790	9,025
Eni Spa	12.70	-8.0%	-8.6%	-14.8%	-10.2%	-8.0%	12.32	17.66	17,123,610	17,543,100	46,154
Exor Spa	36.94	-12.2%	-10.3%	-12.6%	8.2%	-12.2%	33.28	47.18	339,442	361,580	9,096
Ferrari Nv	40.54	na	na	na	na	na	40.07	46.19	na	na	7,659
Fiat Chrysler Automobiles Nv	7.36	-14.1%	-12.9%	-10.7%	11.4%	-14.1%	6.44	10.79	20,145,550	11,690,940	9,429
Finnmeccanica Spa	12.38	-4.0%	-6.6%	10.5%	57.8%	-4.0%	7.52	13.94	2,343,087	2,496,197	7,158
Assicurazioni Generali	15.86	-6.3%	-8.0%	1.7%	-7.1%	-6.3%	15.16	19.21	6,473,278	5,807,663	24,692
Intesa Sanpaolo	2.90	-6.2%	-6.8%	-5.5%	22.2%	-6.2%	2.25	3.65	76,090,650	75,441,480	48,447
Italcementi Spa	10.20	-0.5%	-0.3%	76.2%	119.8%	-0.5%	4.57	10.28	1,151,180	1,096,207	3,563
Luxottica Group Spa	56.95	-5.7%	-7.3%	-2.6%	22.8%	-5.7%	45.24	67.80	892,923	654,733	27,541
Mediaset Spa	3.43	-10.6%	-13.3%	-22.1%	4.2%	-10.6%	3.17	4.93	5,730,913	5,530,077	4,047
Mediocredito Spa	8.01	-9.9%	-8.3%	-5.0%	17.9%	-9.9%	6.38	10.15	2,264,063	2,827,457	6,967
Moncler Spa	12.35	-4.4%	-14.8%	-19.8%	12.0%	-4.4%	10.75	19.00	1,668,815	1,484,183	3,089
Pharmion Spa	18.21	-10.1%	-8.7%	-1.7%	21.9%	-10.1%	14.15	22.35	901,633	929,260	3,946
Salpem Spa	6.77	-9.7%	-8.3%	-22.9%	-18.1%	-9.7%	6.69	12.85	2,213,321	2,982,888	2,986
Salvatore Ferragamo Spa	19.99	-8.1%	-9.8%	-18.2%	-3.4%	-8.1%	18.50	32.55	1,014,033	731,074	3,374
Snam Spa	4.93	2.1%	1.6%	13.9%	22.7%	2.1%	3.88	5.01	13,867,800	15,832,160	17,258
Stmicroelectronics Nv	5.58	-10.9%	-12.9%	-20.2%	-13.4%	-10.9%	5.58	9.60	3,306,747	4,020,215	5,083
<b>Telecom Italia Spa</b>	<b>1.077</b>	<b>-8.3%</b>	<b>-7.5%</b>	<b>-5.3%</b>	<b>23.1%</b>	<b>-8.3%</b>	<b>0.85</b>	<b>1.32</b>	<b>70,472,920</b>	<b>101,987,200</b>	<b>19,829</b>
Tenaris Sa	9.87	-9.8%	-9.0%	-14.8%	-17.5%	-9.8%	9.70	15.34	3,331,299	3,608,459	11,652
Terna Spa	4.68	-1.6%	0.3%	17.7%	29.1%	-1.6%	3.54	4.86	7,343,761	8,017,101	9,403
TotS Spa	69.05	-5.5%	-8.0%	-11.4%	-4.5%	-5.5%	67.15	98.00	81,417	105,374	2,114
Ubi Banca Spa	5.45	-12.1%	-7.6%	-19.7%	-3.5%	-12.1%	5.18	7.88	3,662,095	4,325,401	4,915
Unicredit Spa	4.67	-9.0%	-9.8%	-17.2%	-10.0%	-9.0%	4.43	6.61	54,720,130	42,011,260	27,911
Unipol Gruppo Finanziario Sp	4.33	-9.1%	-6.0%	3.2%	10.2%	-9.1%	3.80	5.45	1,891,729	2,284,257	3,108
Unipolscv Spa	2.13	-9.6%	-10.2%	2.1%	-3.2%	-9.6%	1.88	2.80	6,292,780	7,471,439	6,039
Yox Net-A-Porter Group	31.14	-9.9%	-9.9%	12.6%	95.4%	-9.9%	15.51	36.78	592,173	779,769	4,052

\*\* for FTSE MIB stocks, market cap here reported on overall shares outstanding